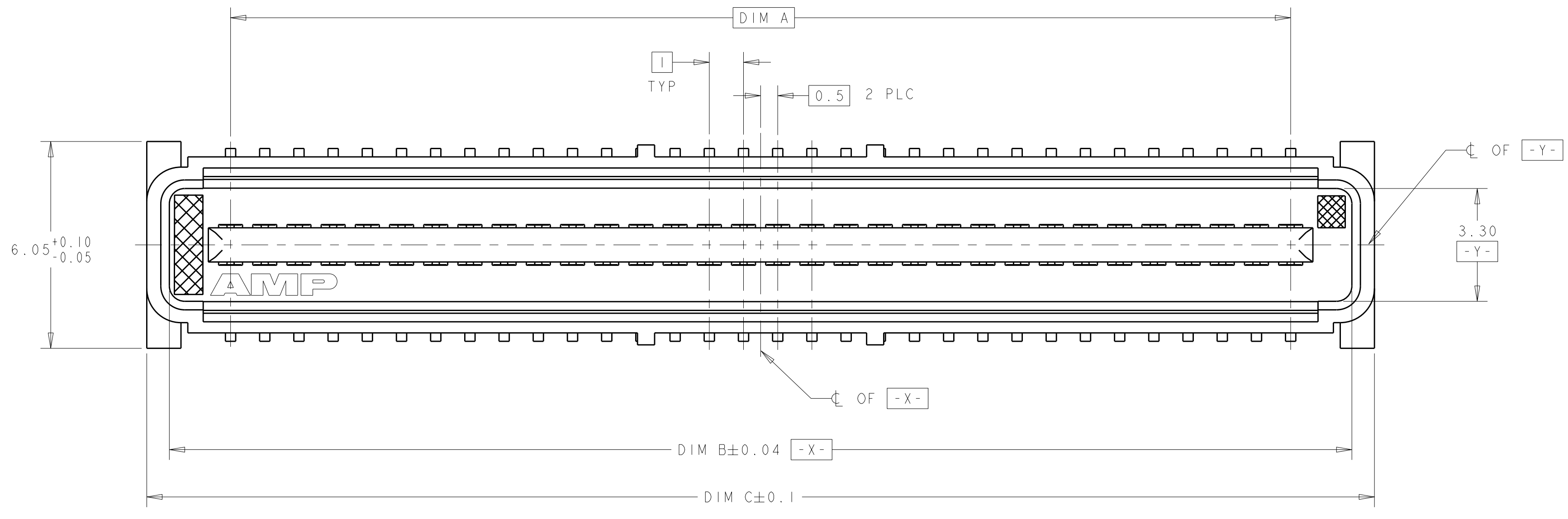
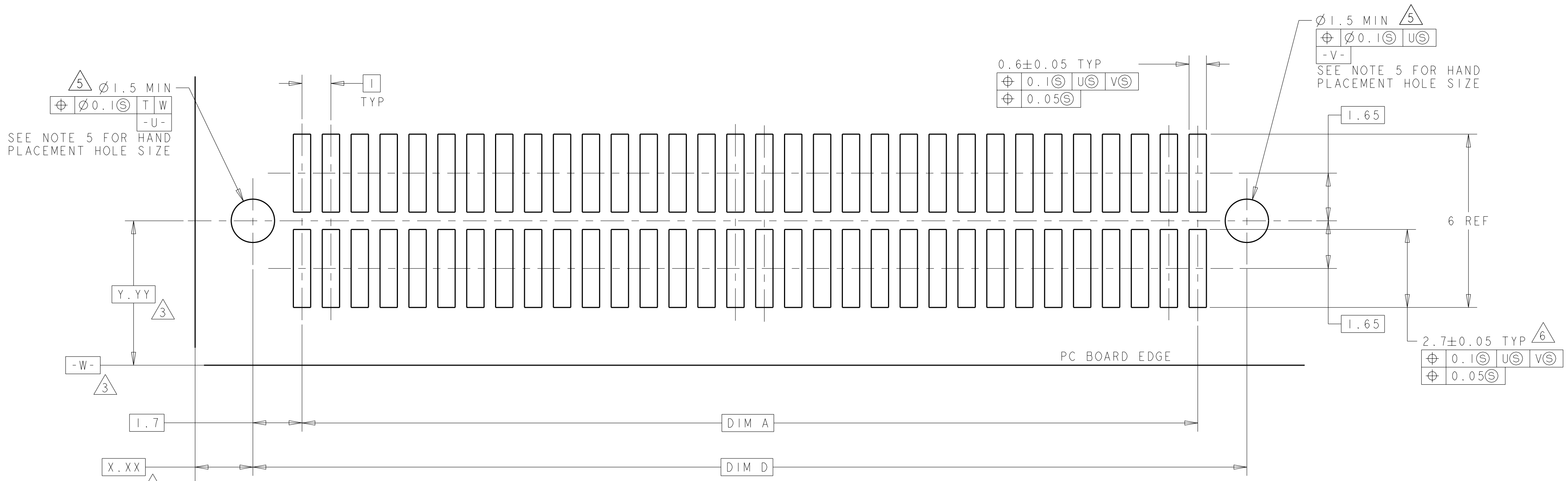
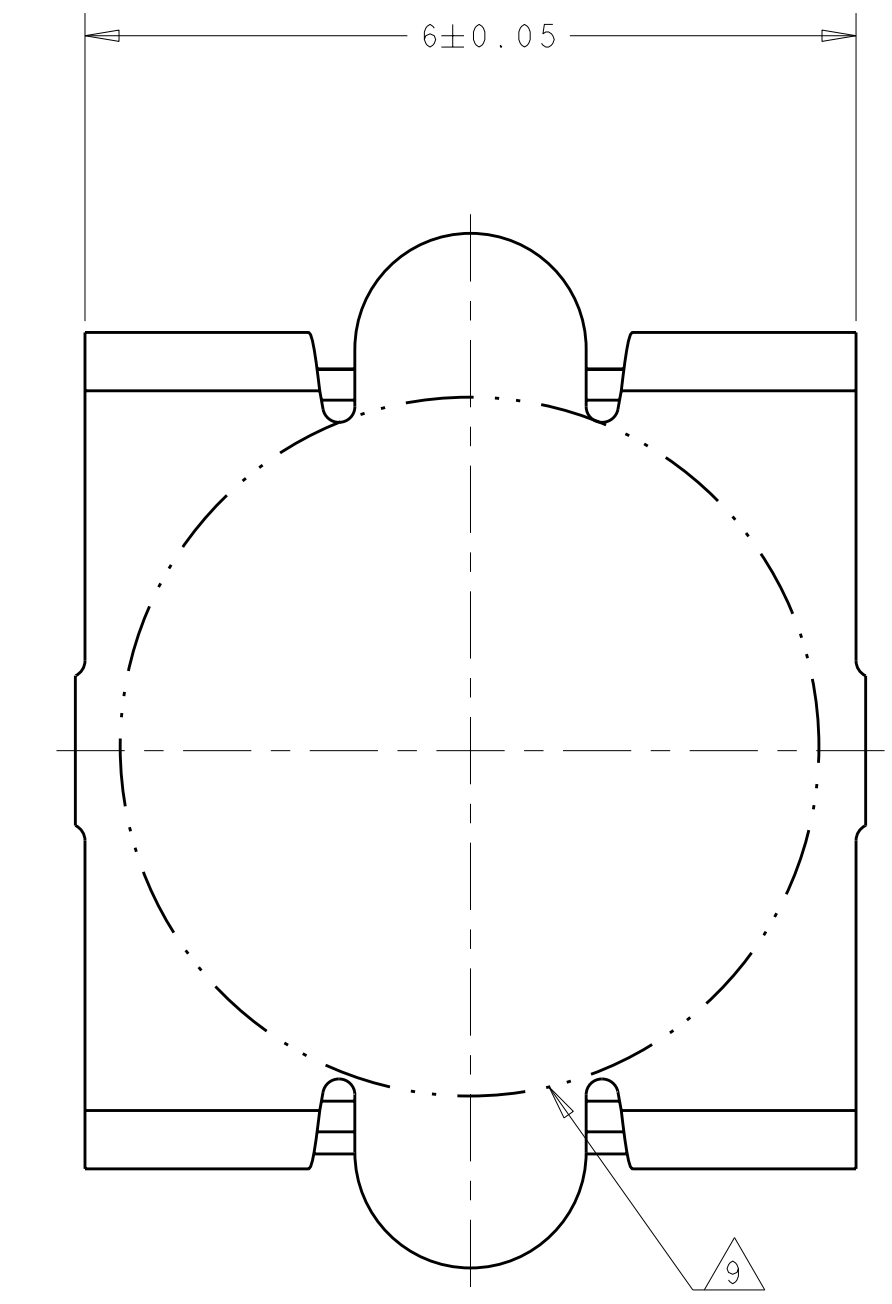
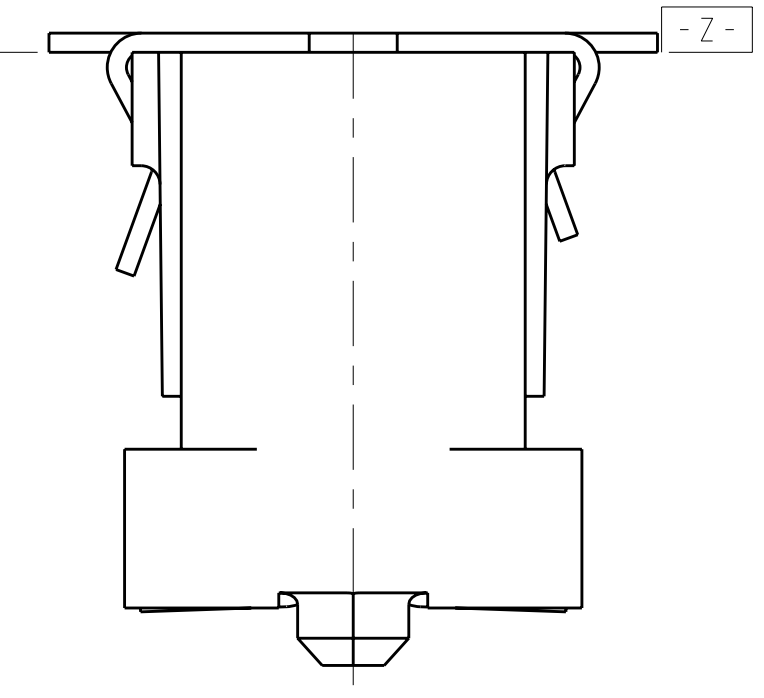
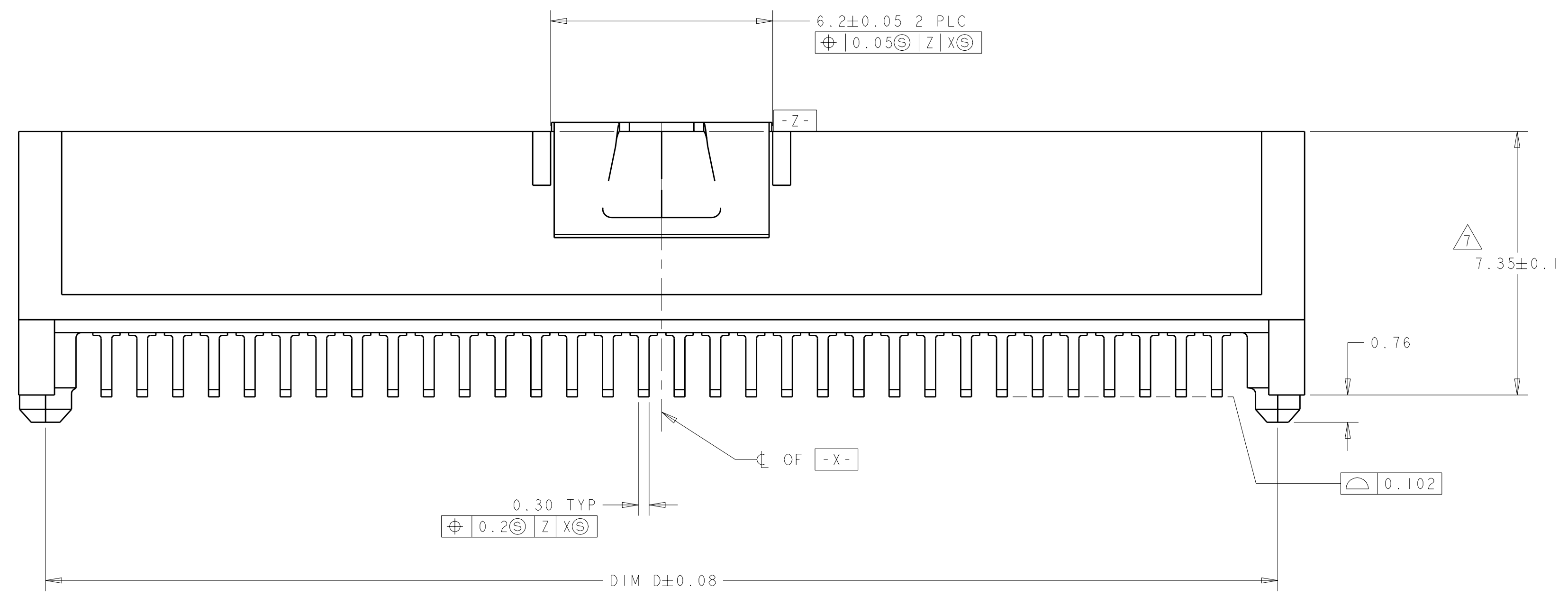


| LOC | DIST | REV | DATE | BY | APP'D |
|-----|------|-----|-----------|----|-------|
| AD | 00 | 0 | 01OCT2004 | BC | RW |
| | | A | 22JAN2007 | BC | DB |
| | | B | 10JUL2008 | DH | DB |



- 1 HOUSING MATERIAL: LIQUID CRYSTAL POLYMER COLOR: BLACK. CONTACT MATERIAL: PHOSPHOR BRONZE.
- 2 CONTACT FINISH: NICKEL UNDERPLATE ALL OVER, MATING SURFACES PLATED TO MEET PLI PERFORMANCE REQUIREMENTS OF INDUSTRY SPECIFICATION EIA-700AAAAB, SOLDER TAILS PLATED TIN.
- 3 DATUM LOCATIONS AND BASIC DIMENSIONS TO BE ESTABLISHED BY THE CUSTOMER. CONSULT AMP ENGINEERING WHEN PLACING MULTIPLE CONNECTORS ON A PC BOARD.
- 4 PACKAGED IN TAPE ON REEL PER EIA-481.
- 5 1.4±0.05 DIAMETER HOLE WHEN PLACING BY HAND.
- 6 SHORTER SOLDER LANDS MAY BE USED PER EIA 700AAAAB, HOWEVER 2.7 LENGTH ASSURES OPTIMUM SOLDER FILLET REGARDLESS OF MANUFACTURER OF CONNECTOR.
- 7 REFERRED TO AS DIM N IN EIA 700AAAAB SPECIFICATION.
- 8 VACUUM COVER NOT SHOWN IN SOME VIEWS FOR CLARITY.
- 9 5.5 MIN DIAMETER TARGET AREA FOR VACUUM PICK-UP.
- 10 CONTACT FINISH: 0.00381 MINIMUM MATTE TIN PER ASTM B 545 ON SOLDER AREA; 0.00127 MINIMUM GOLD PER ASTM B 488 ON MATING AREA, BOTH OVER 0.00127 MINIMUM NICKEL PER SAE-AMS-QQ-N-290 ON ENTIRE CONTACT.
- 11 SEE CATALOG FOR OTHER MATING CONNECTOR OPTIONS.



| FINISH | DIM D | DIM C | DIM B | DIM A | MATING CONNECTOR | STACK HEIGHTS | POS | PART NUMBER |
|--------|-------|-------|-------|-------|------------------|---------------|-----|-------------|
| 10 | 44.4 | 45.9 | 44.58 | 41 | 1-5146896-2 | 14 | 84 | 1-5146898-2 |
| 10 | 44.4 | 45.9 | 44.58 | 41 | 1-5146894-2 | 11 | 84 | 1-5146898-2 |
| 10 | 44.4 | 45.9 | 44.58 | 41 | 1-5146893-2 | 9 | 84 | 1-5146898-2 |
| 10 | 34.4 | 35.9 | 34.58 | 31 | 1-5146896-1 | 14 | 64 | 1-5146898-1 |
| 10 | 34.4 | 35.9 | 34.58 | 31 | 1-5146894-1 | 11 | 64 | 1-5146898-1 |
| 10 | 34.4 | 35.9 | 34.58 | 31 | 1-5146893-1 | 9 | 64 | 1-5146898-1 |
| 2 | 44.4 | 45.9 | 44.58 | 41 | 5146896-2 | 14 | 84 | 5146898-2 |
| 2 | 44.4 | 45.9 | 44.58 | 41 | 5146894-2 | 11 | 84 | 5146898-2 |
| 2 | 44.4 | 45.9 | 44.58 | 41 | 5146893-2 | 9 | 84 | 5146898-2 |
| 2 | 34.4 | 35.9 | 34.58 | 31 | 5146896-1 | 14 | 64 | 5146898-1 |
| 2 | 34.4 | 35.9 | 34.58 | 31 | 5146894-1 | 11 | 64 | 5146898-1 |
| 2 | 34.4 | 35.9 | 34.58 | 31 | 5146893-1 | 9 | 64 | 5146898-1 |

RECOMMENDED PC BOARD LAYOUT

| | | | | | |
|---|--|---|--|--|--|
| DIMENSIONS: mm TOLERANCES UNLESS OTHERWISE SPECIFIED: 9 PLC ± 5 PLC ±0.03 4 PLC ±0.003 ANGLES ±0°30' | | DWG: 01OCT04 CHK: R. WERTZ APP'D: R. WERTZ | | Tyco Electronics Harrisburg, PA 17105-3608 | |
| MATERIAL: SEE TABLE | | PRODUCT SPEC: 502-1079 APPLICATION SPEC: 114-25045 | | PLUG ASSY, W/VACUUM COVER, 1.0mm FH(IEEE 1386) CONNECTOR | |
| CUSTOMER DRAWING | | SCALE: 17:1 | | SHEET 1 OF 1 REV B | |